



R06 ECO | MINI EXCAVATOR



R06 ECO: EXCLUSIVE FEATURES



ENGINE

KUBOTA Z482 ENGINE, RATED POWER 8.2KW

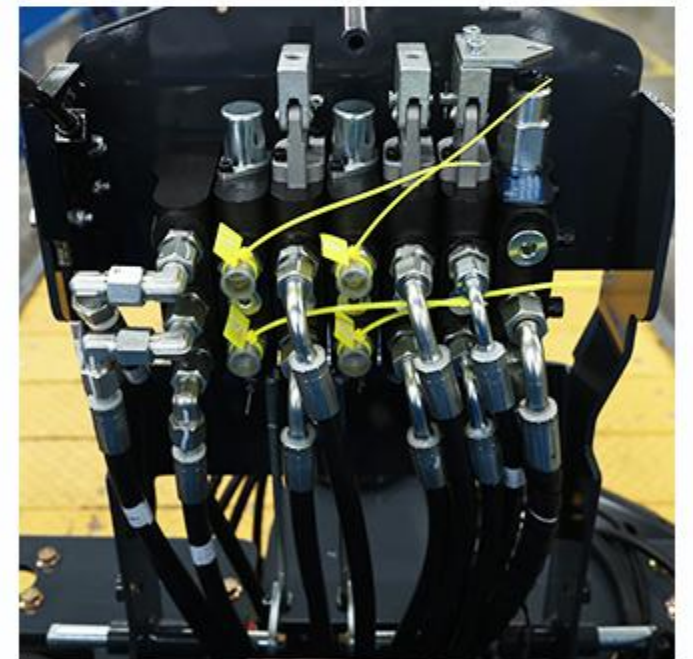
- High-Efficiency power output
- Low fuel consumption
- Low noise & vibration



PUMP

GEAR PUMP

- Provides stable hydraulic flow
- Flow rates of 18 L/min
- Keep the hydraulic system stable



VALVE

MECHANICAL VALVE

- Simple and reliable, easy to operate with low failure rate.
- Durable, withstands harsh working conditions.
- Cost-effective, low maintenance and long service life.



R06 ECO RIPPA

TRACK

ENGINEERING RUBBER TRACKS

- Smooth driving with little vibration
- Easily handle slopes and complex working conditions



FLEXIBLE BODY



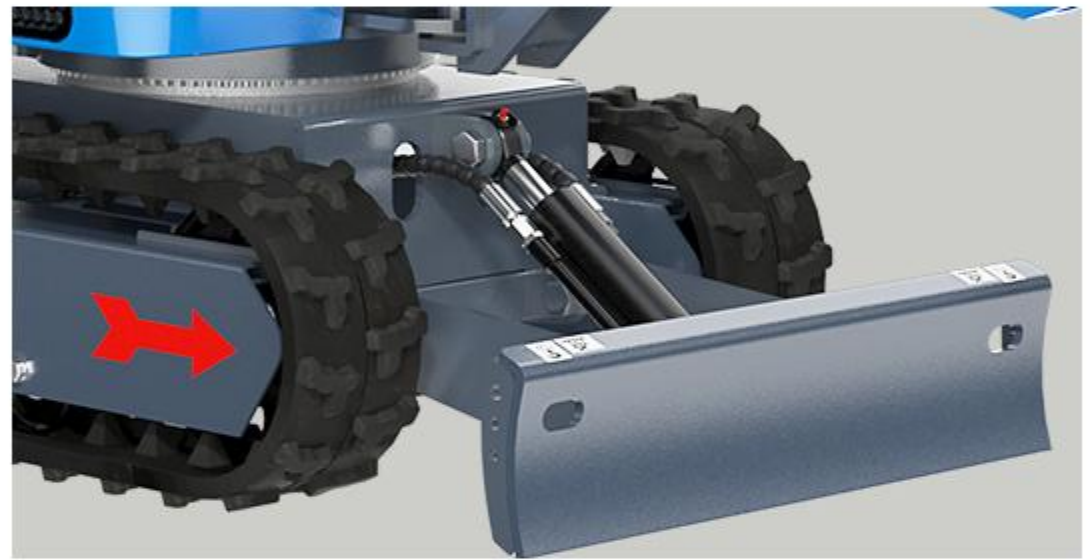


► COMPACT BODY

Compact size. With a width of only 747mm, it can operate in confined spaces such as narrow alleys, indoor buildings, and urban corners. Examples include pipeline renovations in old residential areas and interior decoration work in shopping malls—scenes where large equipment cannot access, allowing it to efficiently complete tasks.

► STRENGTHEN BULLDOZER BLADE

The bulldozer blade body is made of high-strength steel, making it wear-resistant and impact-resistant. Reinforced with ribs, it boasts increased strength and service life. Oil injection holes have been added at the joints for easy lubrication.



WIDE RANGE OF OPERATIONS

► CAN BE EXCAVATED IN NARROW SPACES

By swinging the work machine, it is possible to excavate in narrow spaces and near walls.

Boom swing angle (right): 70°

Boom swing angle (left): 70°

► WIDE WORKING RANGE

Despite its compact size (weighing just 747 kg), it offers powerful digging performance and a wide working range. It makes digging and loading soil onto trucks easy. Maximum digging radius: 2565mm, Maximum excavator depth: 1001mm



FEATURES AND FUNCTIONS



KEY FEATURES



- » The front-mounted operating lever ensures ample space for the feet and around the driver's seat.
- » Machine operation is only permitted when the operating lock is open, enhancing machine safety and preventing accidental operation.



- » Effectively prevents drivers from slipping and ensures physical stability during operation.
- » Illuminated signs serve as warnings, making nighttime work safer.





► COMFORTABLE SEATS

The seat is equipped with a seatbelt, is adjustable fore and aft, and features a removable headrest. There is a storage compartment in the back for storing instruction manuals and tools.



► LED LIGHT

A low-heat, vibration-resistant LED light is included as standard.



► REAR-MOUNTED BOOM CYLINDER

When scooping large stones or concrete pieces with a bucket, loading them onto a dump truck, or using an on-board breaker, you can work without worrying about damaging the boom cylinder.



► FULL-OPENING HOOD & HOOD GRIP

The fully-opening hood opens wide to the rear. Routine inspections and part replacements of the engine and fuel system are easy.

► WATER COOLING

Higher heat dissipation efficiency and more precise and stable temperature control.



RIPPA ATTACHMENTS



PERFORMANCE MATCHED

It supports quick attachment changes, enabling one machine to handle digging, breaking, grabbing, drilling, leveling, and trenching. By adapting to different tasks, it boosts efficiency, reduces equipment and rental costs, and lowers labor dependency. More than just a machine, it's a personal engineering team ready to work anytime.

Visit rippa.com



BUCKET

- Optional bucket sizes.
- weight:15kg
size:45 × 20 × 40 cm
- weight:22kg
size:45 × 40 × 40 cm
- weight:29kg
size:45 × 60 × 40 cm
- weight:36kg
size:45 × 80 × 40 cm



MUD BUCKET

- Optional bucket sizes.
- weight:16.5kg
size:35 × 40 × 40 cm
- weight:21kg
size:35 × 60 × 40 cm
- weight:27kg
size:35 × 80 × 40 cm
- weight:32kg
size:35 × 100 × 40 cm



RIDDLE BUCKET

- Optional bucket sizes.
- weight:31kg
size:45 × 60 × 40 cm



RAKE

- Optional rake sizes.
- weight:16.5kg
size:53 × 43 × 18 cm
- weight:22kg
size:53 × 63 × 18 cm
- weight:28kg
size:53 × 83 × 18 cm



RIPPER

- Optional ripper size
- weight:16.5kg
size:53 × 14 × 20 cm



TILTING BUCKET

- Optional tilting bucket size
- weight:39.5kg
size:72 × 60 × 30 cm
- weight:53kg
size:72 × 80 × 30 cm
- weight:58kg
size:72 × 100 × 30 cm



LOG GRAPPLE

- Optional Lightweight log grapple sizes.
- weight:37kg
size:50 × 45 × 54 cm



HYDRAULIC BREAKER

- Hydraulic breaker size
- weight:79kg
size:66 × 30 × 40 cm



QUICK CHANGE

- Mechanical quick-change size
- weight:19kg
size:31 × 19 × 25 cm



RIPPA ATTACHMENTS

ROTARY DRILL

- Optional rake sizes.
- Weight: 50kg
Length: 130cm Diameter: 15cm
- Weight: 51kg
Length: 130cm Diameter: 20cm
- Weight: 53kg
Length: 130cm Diameter: 30cm
- Weight: 54kg
Length: 150cm Diameter: 30cm
- Weight: 55kg
Length: 170cm Diameter: 20cm



APPLICATION SCENARIOS



REPAIR LANE



**DIG DRAINAGE
DITCHES**



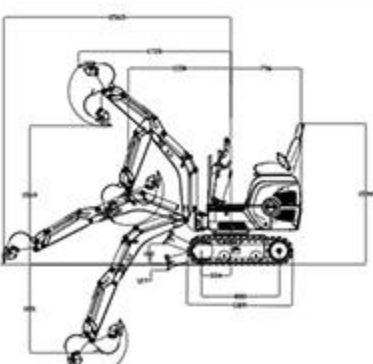
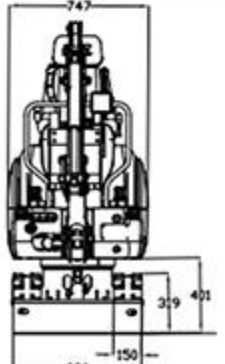
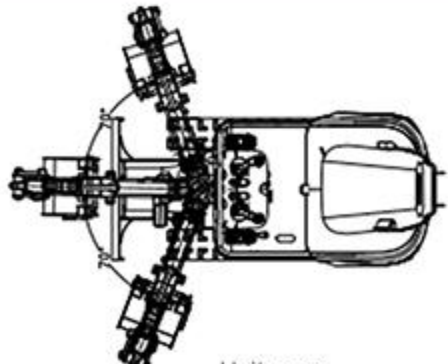
**SNOW
REMOVAL**



**LEVELING
THE LAND**

DETAILED PARAMETER CONFIGURATION

Basic parameters		
Operating weight	747kg	1647lb
Bucket capacity	0.014m ³	0.494ft ³
Travel speed low/high	0-1.5km/h	0-0.93mph
Gradeability	30%	30%
Ground pressure	-	-
Maximum digging force	9.2kn	2068lbf
Maximum digging radius	2565mm	101.1in
Maximum digging depth	1001mm	39.4in
Maximum digging height	2236mm	88.1in
Maximum dumping height	1569mm	61.8in
Maximum deflection angle	70°	70°
Track extension range	-	-
Body		
Transport length	-	-
Transport width	747	29.4in
Transport height	1594	62.8in
Counterweight ground clearance	401	15.8in
Bucket width	300	11.8in
Boom length	1800	70.9in
Arm length	-	-
Bulldozer blade width	-	-
Engine		
Engine brand	Kubota	Kubota
Engine model	Z482	Z482
Maximum power	8.2KW	11hp
Maximum speed	3000rpm	3000rpm
Displacement	0.13gal	0.13gal
Number of cylinders	2	2
Cooling method	Water-cooled	Water-cooled
Engine oil change amount	0.396gal	0.396gal
Fuel form	Diesel	Diesel
Fuel grade	0/-10	0/-10
Theoretical fuel consumption	0.8-1.2L/h	0.8-1.2L/h
Hydraulic system		
Main pump maximum flow (L/min)		18l/min
Multi-way valve	8-way manual multi-way valve	
Multi-way valve brand		Taifeng
Rated set pressure (Mpa)		17MPa
Maximum set pressure (MPa)		18MPa
Travel hydraulic motor type		

Unit: mm

Shandong Rippla Machinery Group Co., Ltd.

Address: No. 39, Guang'an Road, Liuhan Sub-district Office, High-tech Zone, Jining City, Shandong Province.

Some specifications are based on engineering measurements and may differ from actual conditions. Specifications are for comparison purposes only and are subject to change without notice. Specifications of individual RIPPA devices may vary due to normal variations in design, manufacturing, operating conditions and other factors. Some images of RIPPA devices are not limited to standard packages.



RIPPA[®]